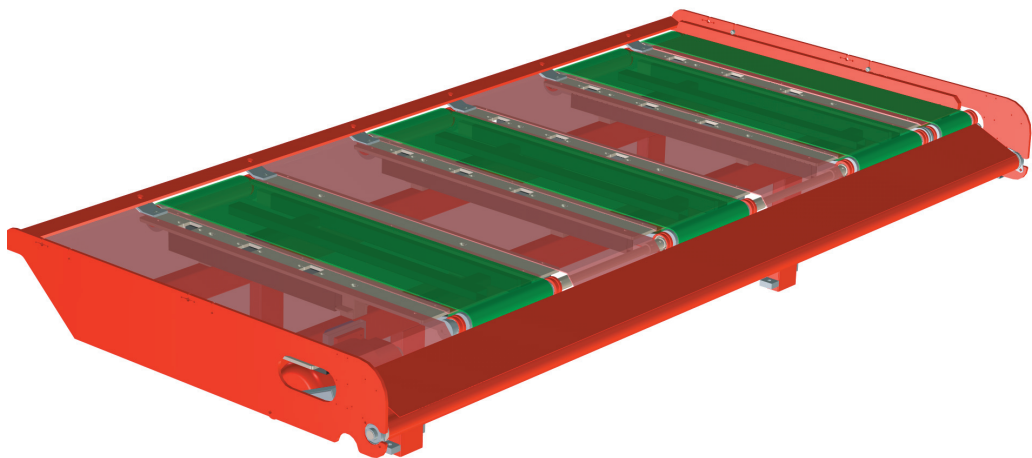


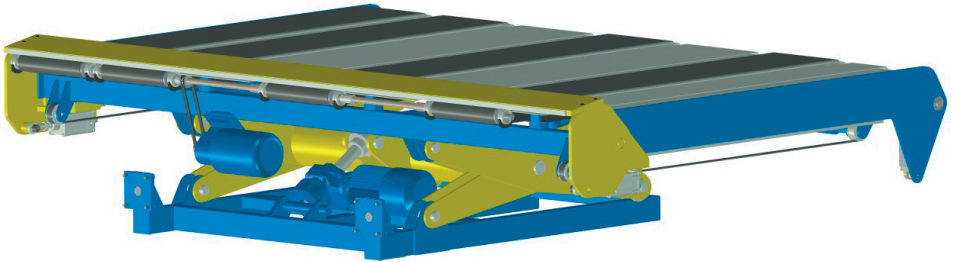


Conveyer for Guillotine Shears



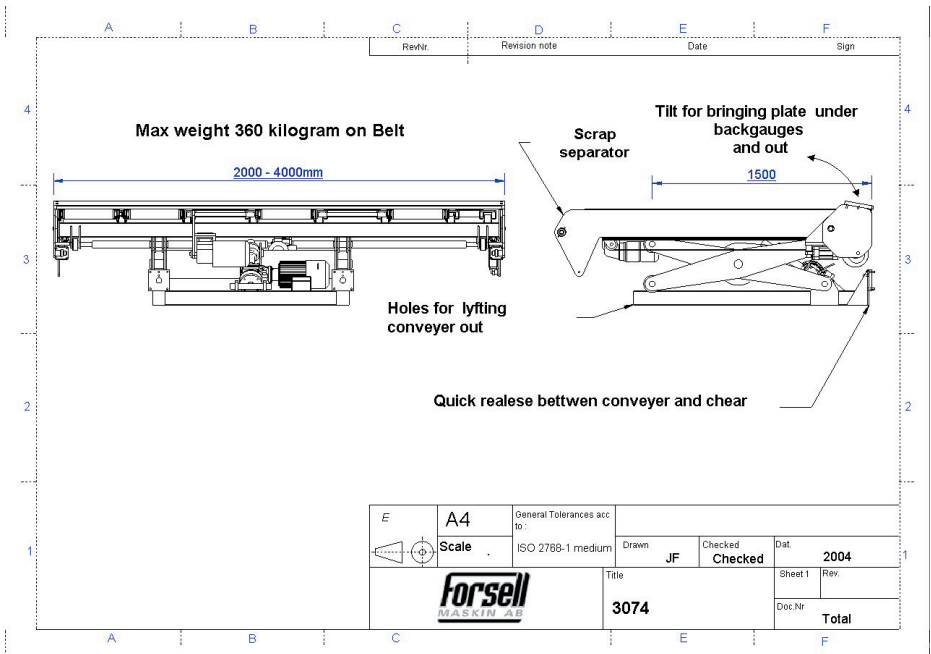
www.forsellmaskin.se

Conveyer with backgauges

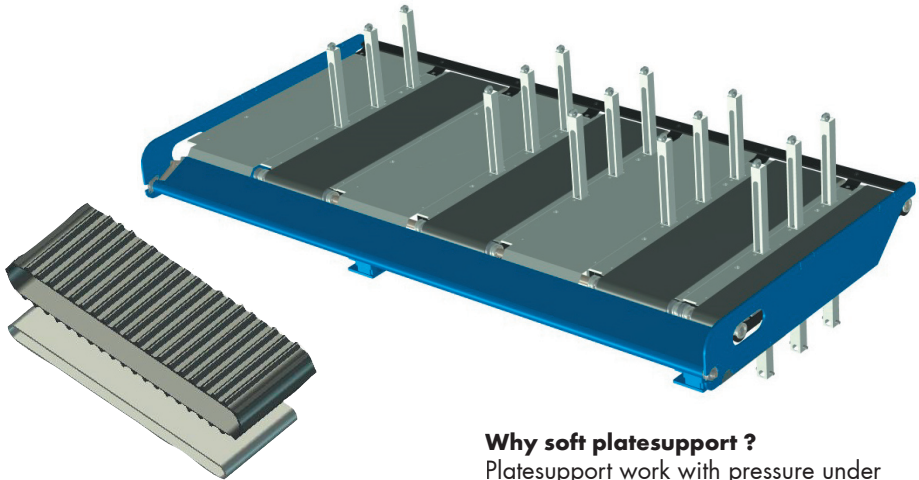


Why backgauges on conveyer instead on shearer ?

1. Plate back to sender (with return belt/backgauges).
2. 1500mm standard measure to backgauges.
3. When cutting, belts helps plate into backgauges.
4. Good for cutting thinn plates and don't damage paint.
5. Cut plates to sender (cutting backwards)
6. Simple cutting long plates (press button backgauges tilt up).



Conveyer With soft platesupport



Skoterbelts or flatbelts?

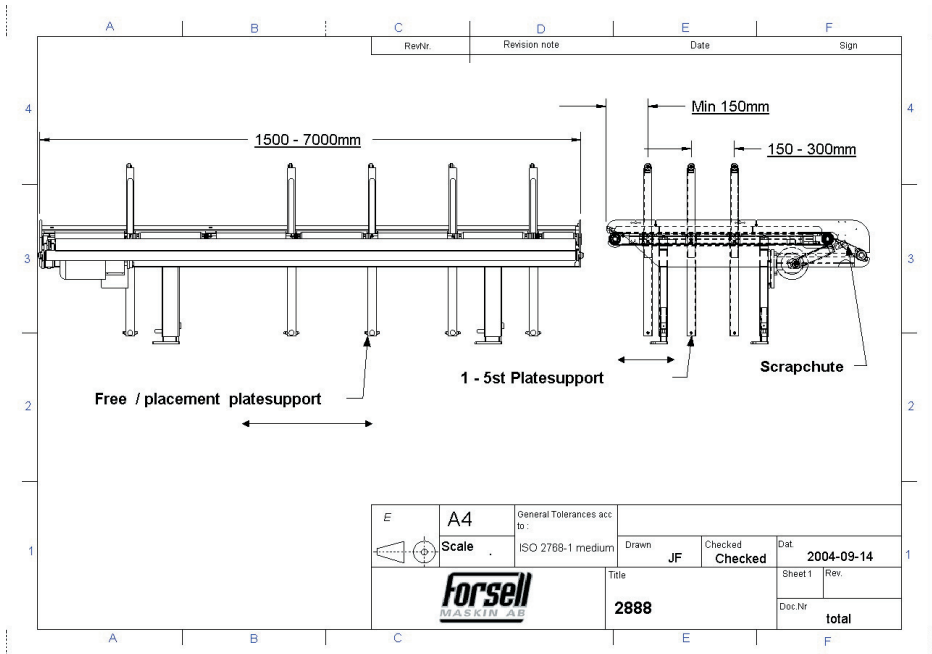
Skoterbelts cutting heavy small pieces

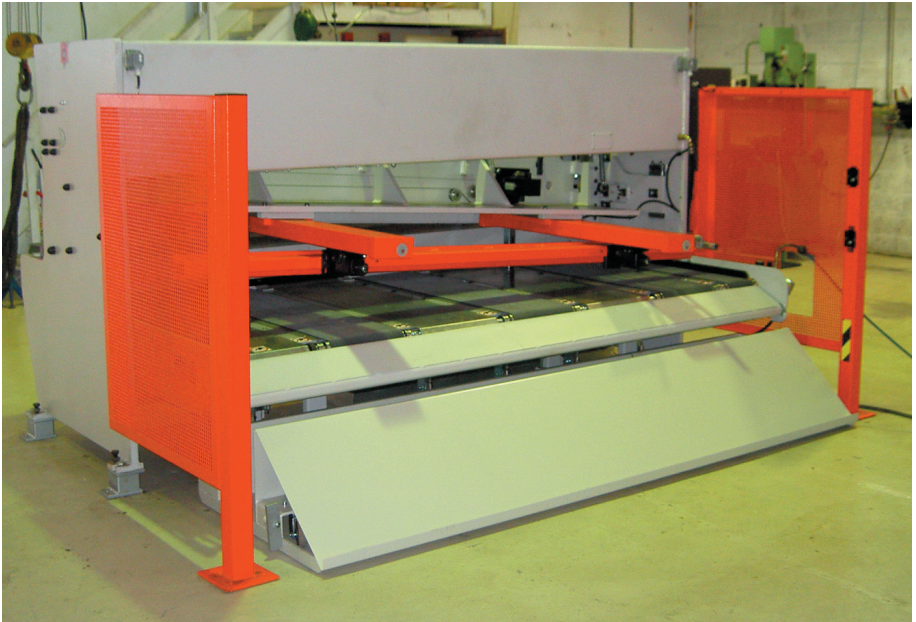
Flatbelts less noise/better with oil /better small pieces

Why soft platesupport ?

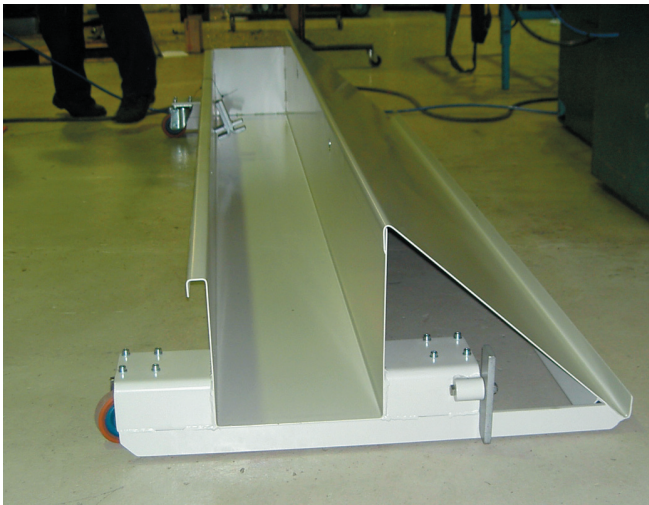
Platesupport work with pressure under plate during cut.

It's the same thing to hold hands under plate during cutting





Conveyer With flat belts behind shear.



Scrapbox with simple stacking.